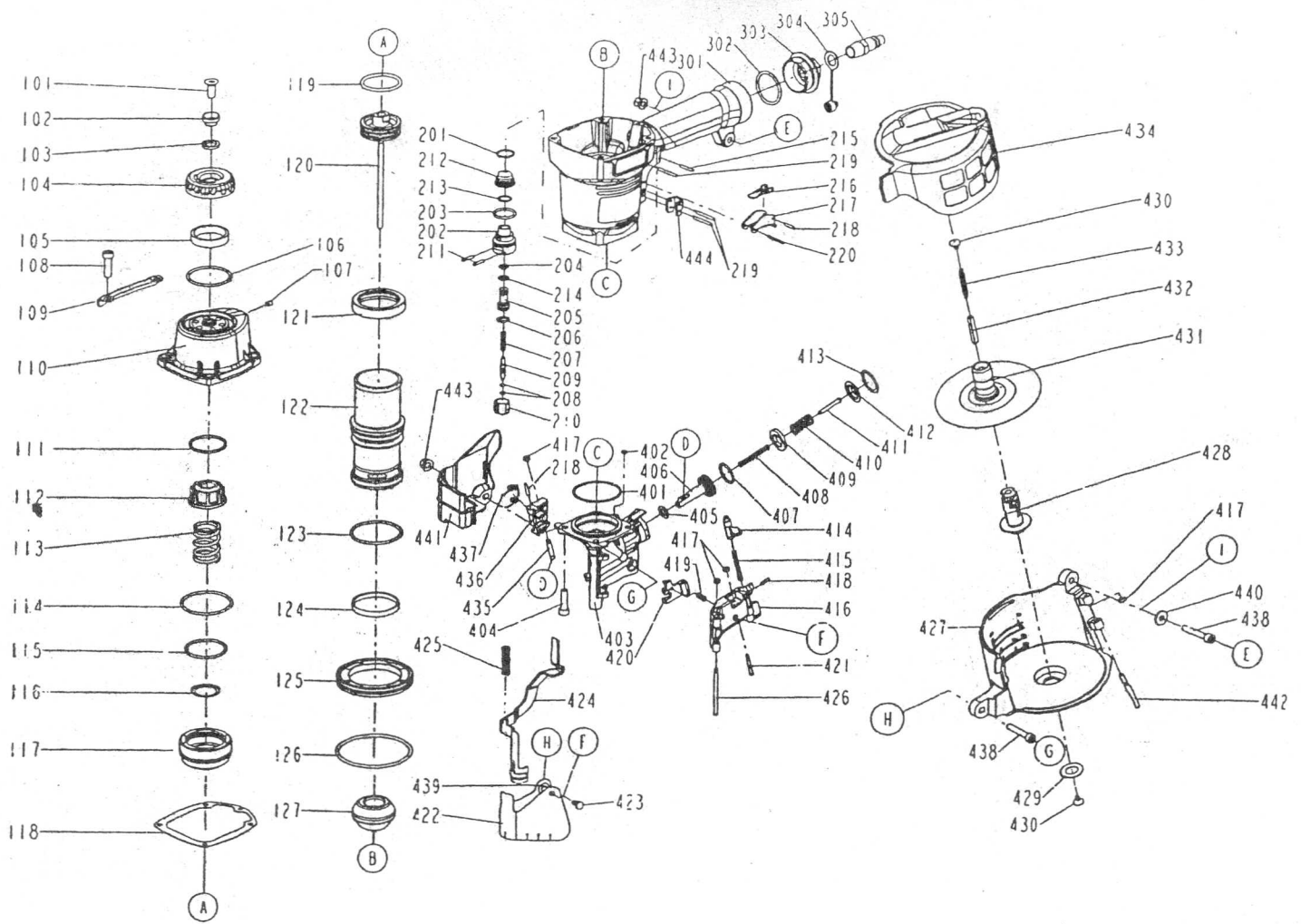


DIAGRAM OF FCN57XHH



ITEM NO.	PART NO.	DESCRIPTION	ITEM NO.	PART NO.	DESCRIPTION	ITEM NO.	PART NO.	DESCRIPTION
101	3034010200	COUNTER SUNK SCREW	207	11376-0860001-1	SPRING	416	11361-0954701-1	DOOR
102	11381-0954702-1	WASHER	208	2041108-01020-0	O - RING	417	1135H-0860001-1	PU RETAINER
103	104611701	RUBBER PAD	209	11375-0860001-1	PLUNGER	418	246202	SPRING PIN
104	11371-0954701-1	DEFLECTOR	210	11373-0860001-1	TRIGGER VALVE HEAD	419	1133C-0860001-1	STOPPER FINGER SPRING
105	1132T-0780001-1	MUFFLER	211	11329-0860001-1	PIN	420	11358-0954701-1	NAIL STOP
106	2041102-05050-0	O - RING	212	1137A-0860001-1	COVER-PLUNGER	421	11359-0954701-1	PIN-NAIL STOP
107	20810505C12	HEX.SOC.HD.SCREW	213	2041104-02070-0	O - RING	422	11383-0950001-1	MUZZLE PROTECTOR
108	2040101-04091-0	HEX.SOC.HD.BOLT	214	2152018	O - RING	423	1134B-0864701-1	DUST SHIELD PLUG
109	11397-0954701-1	GUIDE COVER	215	246212	SPRING PIN	424	11330-0954701-1	SAFETY
110	11369-0954301-1	CAP	216	11317-0864701-1	SECONDARY TRIGGER	425	11337-0954701-1	SAFETY SPRING
111	11381-0950001-1	WASHER SEAL	217	11316-0864701-1	TRIGGER	426	11362-0954701-1	DOOR SHAFT PIN
112	11370-0950001-1	SEAL	218	246072	SPRING PIN	427	11354-0954701-4	MAGAZINE CASE
113	11360-0950001-1	COMPRESSION SPRING	219	2040400-05150-0	SPRING PIN	428	11357-0954701-1	MAGAEING POST
114	2041104-06050-0	O - RING	220	2040404-05130-0	SPRING PIN	429	1138Y-0954701-1	RUBBER RING
115	2041109-05100-0	O - RING	301	11230-0954101-1	GUN BODY UNIT	430	1134M-0864701-1	SPRING BASE
116	11381-0950002-1	WASHER	302	2152094	O - RING	431	11356-0950001-1	SPACER
117	11368-0950001-1	HD.VALVE PISTON	303	11346-0954301-1	END CAP	432	1138W-0860001-1	SPACER
118	11302-0954701-1	CYLINDER CAP SEAL	305	2305021	AIR PLUG	433	11328-0860001-1	PULL SPRING
119	2041100-04031-0	O - RING	401	2041109-05110-0	O - RING	434	11355-0954701-2	MAGAZINE COVER
120	11204-0950001-1	DRIVER UNIT	402	2041108-01010-0	O - RING	435	11365-0864701-1	PIN FEED PISTON
121	11399-0954701-1	COLLAR	403	11382-0954701-1	NOSE PIECE	436	11306-0954701-1	FEED FINGER 2.1/2.3 FLAT
122	11320-0950001-1	CYLINDER	404	2040101-04090-2	HEX.SOC.HD.BOLT	437	11307-0864701-1	FEED FINGER SPRING
123	2041104-06050-0	O - RING	405	2152111	O - RING	438	2040101-04051-0	HEX.SOC.HD.BOLT
124	11322-0954701-1	CYLINDER RING	406	11364-0954701-1	FEED PISTON	439	1135U-0864701-1	PROTECTOR WASHER
125	11321-0950001-1	CYLINDER SPACER	407	2041100-03051-0	O - RING	440	2121063	FLAT WASHER
126	2041101-08020-0	O - RING	408	11367-0954702-1	PUSHER SPRING B	441	1134R-0954701-1	SPRING COVER
127	11327-0954701-1	BUMPER	409	1134W-0950001-1	FEED BUMPER	442	1136R-0954701-1	MAGAZINE SHAFT PIN
201	2041104-02060-0	O - RING	410	11367-0954701-1	PUSHER SPRING A	443	3413030000	BOLT CAP
202	11374-0860001-1	PLUNGER CAP	411	11395-0954701-1	ROD	444	11338-0954701-1	SAFETY GUIDE
203	2152061	O - RING	412	11366-0954701-1	FEED PISTON CAP			
204	2152058	O - RING	413	227202	C - RING			
205	1133S-0860001-1	VALVE PLUNGER	414	11310-0864701-1	DOOR LATCH			
206	2152016	O - RING	415	11311-0860001-1	LATCH SPRING			